



Critical power system visibility & management

POWER MANAGEMENT

user-customized displays

flexible

130

150

300

600

900

1000

2000

lines of information

Active Power provides a variety of system visibility and management tools to improve your awareness of power-related events and ultimately increase your power system reliability. From baseline Data Integration to Active Power's proprietary CleanSource View (CSView) monitoring and control software, to our leave-it-all-to-us Remote Monitoring Services – we can offer you the degree of system visibility and service that you need to manage your critical power infrastructure.

POWER MANAGEMENT OPTIONS

Data Integration to Your Building Management Software

- Provides the most basic level of performance data integration
- Order with your CleanSource UPS and seamlessly integrate Active Power UPS performance into your Building Management Software (BMS) system
- Connectivity options:
 - MODBUS
 - SNMP

Active Power CSView Monitoring & Control Software

- Enables constant visibility of your critical power infrastructure via a unique, user-friendly software tool from virtually anywhere
- Provides real-time telemetry in a variety of intuitive formats via continuous monitoring and evaluation of your Active Power systems
- Accessible on site or from anywhere in the world
- Cell Phone, PDA, Email Notification
- Connectivity options:
 - Serial Connection
 - Modem Connection
 - Ethernet Connection

Active Power Monitoring Services Utilizing CSView

- Ensure pure peace of mind by pairing CSView software with remote monitoring service – then focus on your business
- Receive all the benefits of CSView monitoring and control software, plus the professional expertise of our service engineers
- With a modem connection, your system notifies Active Power of critical conditions so we can remotely diagnose potential issues and contact you PROACTIVELY with an action plan
- Monitoring services entitle you to a monthly review and report on your system performance*

*Weekly service available upon request.

FLEXIBLE & CONFIGURABLE DISPLAYS

User-Friendly

- User-Customized Displays – Display tiles can be grouped or rearranged in any way and saved as a default or as a custom screen
- Color-Coded Messages and Displays

Comprehensive

- Event Log Data captures up to 2000 lines of event information as first-in, first-out
- Data logging capabilities enable the computer to log telemetry data twice per second
- Discharge duration log
- Prioritized Alerts; Notice/Alarm
- Detailed and summary view of large systems
- Extensive history of events and alarms

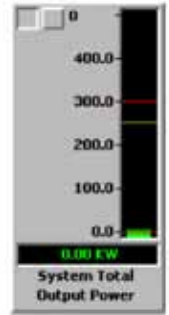
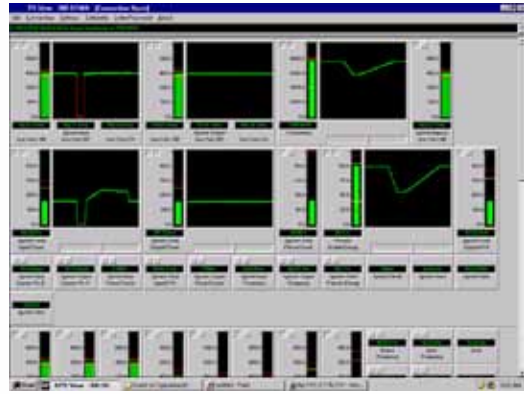
Flexible Display Options

- Numeric tiles provide a digital readout
- Bar graph format enables quick visual comparison along with high and low setpoints
- Line graph displays a trace of two minutes of data

Detailed Event Log

- Detail status throughout a power event
- Time-stamped events, discharges and durations
- Power Source Identification
- UPS kW load documentation
- Easy post-event trouble shooting

CSVIEW SYSTEM DISPLAYS



This value changes color based on its condition (green, yellow, red)



Three phases shown graphically and numerically

Demo CSView NOW

Ask your Active Power representative to dial up and share with you the live demonstration underway now in the 7.5 MW test bay located in our manufacturing facility in Austin * Texas * U.S.A .

GET CONNECTED, STAY INFORMED

CSView provides a comprehensive look at current status, system data, and detailed historical logs to ensure premium power performance of your standby power system. Connectivity via the Internet, LAN network, or direct connection provides the flexibility to meet your requirements by allowing monitoring when and where you need it.

1. Serial Connection

- Directly connect your PC to the serial port of your CleanSource machine; this option is included with your CSView software purchase; 15-foot maximum run.

2. Modem Connection

- Dial-up access allows you to remotely view the performance of your CleanSource UPS.
- Paging services are offered to notify staff of alarm and pre-alarm conditions.
- System manipulation can be accomplished via remote access to the machine for real-time, software-based repairs.
- 2000 lines of text stored, enabling remote diagnostics of events and performance.

3. Ethernet Connection

- Online access to remotely view the performance of your CleanSource UPS
- Email notification of alarm and pre-alarm conditions
- NO data manipulation via Ethernet
- Stores log files to view performance history



Active Power Headquarters USA
sales@activepower.com

Active Power UK
uk@activepower.com

Active Power Germany
germany@activepower.com

Active Power APAC
asiapac@activepower.com

Piller Australia
australia@activepower.com

Piller Italy
italy@activepower.com

Piller Iberica
iberica@activepower.com

Piller India
india@activepower.com

Piller France
france@activepower.com

